

# Megajig

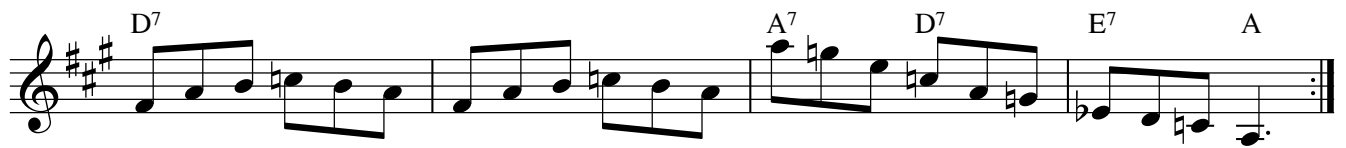
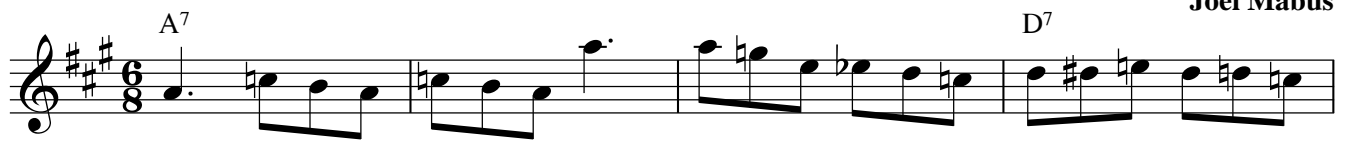
Larry Unger

The musical score for "Megajig" is written in treble clef with a key signature of three sharps (F#, C#, G#) and a 6/8 time signature. The piece consists of eight staves of music. The first staff begins with a treble clef, a key signature of three sharps, and a 6/8 time signature. The melody starts with a quarter rest, followed by a series of eighth and quarter notes. Chords A and D7 are indicated above the first two measures. The second staff continues the melody with chords A, A#, E7, and A#. The third staff repeats the first two measures of the first staff, with chords A and D7. The fourth staff introduces a new sequence of notes with chords A, A#, D, E, and A. The fifth staff features a series of eighth notes with chords D7 and A#. The sixth staff continues with eighth notes and chords D7, A, and A#. The seventh staff repeats the eighth-note pattern with chords D7 and A#. The eighth and final staff concludes the piece with a series of eighth notes and chords E and A#.

Into The Blue Jig

# The Blue Jig

Joel Mabus



## Alternative B music

